

Artemide

LA3513

Artemide Calumet Exterior LED Wall Light

SOURCE: <https://www.davidvillagelighting.co.uk/product/Artemide-Calumet-Exterior-LED-Wall-Light/16025>



PRODUCT DESCRIPTION

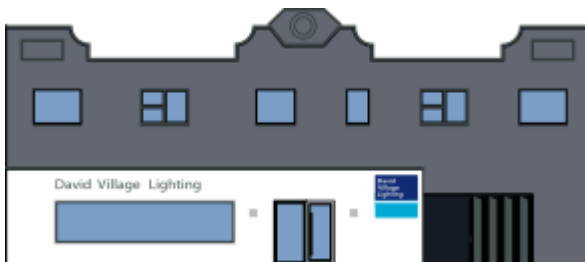
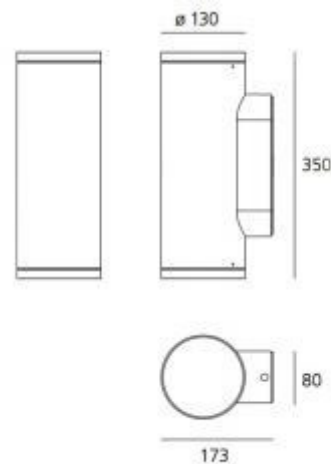
Designer: Ernesto Gismondi

Calumet Wall by Artemide Architectural

Lighting system with single or double emission, with high-performance LED light sources combined with lenses which optimize the light emitting efficiency of the beams and determine their spread. Available in two sizes: \varnothing 8 cm \varnothing 13 cm.

PRODUCT SPECIFICATION

Light Source:	Calumet 8 (One emission) - 4W, 3000K, 184 lumens
	Calumet 8 (Double emission) - 7.5W, 3000K, 369 lumens
	Calumet 13 (One emission) - 7.5W, 3000K, 653 lumens
	Calumet 13 (Double emission) - 15W, 3000K, 1306 lumens
IP Code:	65
Dimensions:	Calumet 8 - \varnothing 8 cm, 25 cm H, 12.4cm D
	Calumet 13 - \varnothing 13 cm, 35cm H, 17.3 cm D



For all sales and technical enquiries, please contact:

+44 (0)114 263 4266

info@davidvillagelighting.co.uk

www.davidvillagelighting.co.uk