



LA3389

## Bega 99396 In Ground LED - Large

SOURCE: <https://www.davidvillagelighting.co.uk/product/Bega-99396-In-Ground-LED---Large/15839>



### PRODUCT DESCRIPTION

Bega 99396 In Ground - Large recessed LED, symmetrical floodlight. Safety glass clear. Made of stainless steel. Complete with housing installation. A separate power supply unit is required to operate the luminaires - contact use for prices: 0114 263 4266.  
**Note: driver required.**

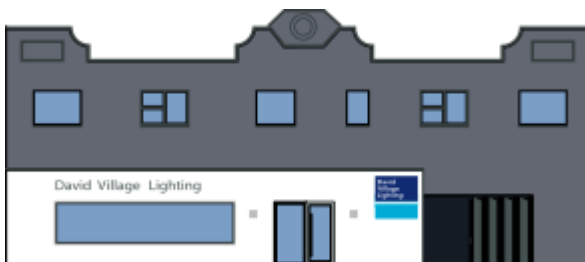
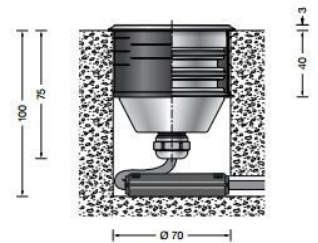
LED floodlight for recessed installation in compacted surfaces with  $\varnothing$  70 mm provided by the customer. Drive-over luminaire from vehicles with pneumatic tyres. For pressure load up to 1,000 kg. In the centre of the glass surface the luminaire attains an operating temperature of only 35 °C (measured according to EN 60598 - ambient temperature of  $t_a$  15 °C).

#### Please note:

Luminaire must not be used for installation in road lanes, where the fixture is exposed to a horizontal strain due to braking, acceleration and change of direction.

### PRODUCT SPECIFICATION

**Light Source:** 4W, 3000K, 269 Lumens  
OR  
5.2W, 4000K, 272 Lumens  
**IP Code:** 68



**For all sales and technical enquiries, please contact:**

+44 (0)114 263 4266

[info@davidvillagelighting.co.uk](mailto:info@davidvillagelighting.co.uk)

[www.davidvillagelighting.co.uk](http://www.davidvillagelighting.co.uk)