

**prandina**  
LIGHTING STORIES

LA3153

## Prandina Teodora Glass Pendant

SOURCE: <https://www.davidvillagelighting.co.uk/product/Prandina-Teodora-Glass-Pendant/15581>



### PRODUCT DESCRIPTION

**Designer:** Sergio Prandina

### Teodora Glass Pendant by Prandina

A natural extension of the idea behind Prandina's [original Teodora](#), the Teodora Glass pendant completely inverts designer Sergio Prandina's earlier design to provide even more options for this already versatile [pendant light](#).

Prandina's talent for working with glass is evident in the form of the sleek, opal white blown glass diffuser on top of which rests a painted metal dome, intended to give 'a lively touch' to the rest of the lamp. This allows light to be emitted in two ways – directly downwards and indirectly around the room – making the Teodora Glass pendant light just as effective at illuminating a kitchen island or shop display as it is at providing mood lighting across a wider space. Available in 2 sizes and 3 finishes.

### PRODUCT SPECIFICATION

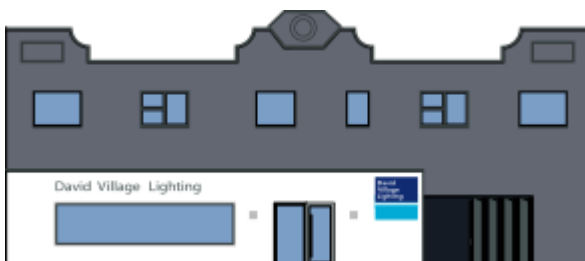
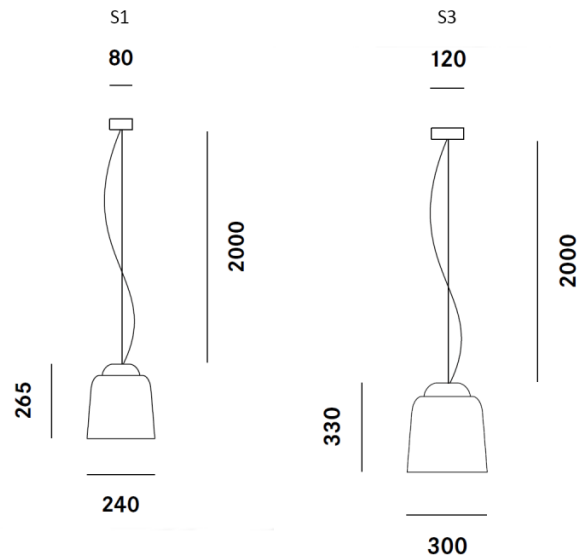
**Light Source:** 1 x E27 100W max (excluded)

**IP Code:** 20

**Dimming:** Dimmable via mains phase dimming

**Dimensions:** S1 - Ø24cm, H 26.5cm  
S3 - Ø30cm, H 33cm

S1 - Ø8cm ceiling rose  
S3 - Ø12cm ceiling rose  
2m cable length



**For all sales and technical enquiries, please contact:**

+44 (0)114 263 4266

[info@davidvillagelighting.co.uk](mailto:info@davidvillagelighting.co.uk)

[www.davidvillagelighting.co.uk](http://www.davidvillagelighting.co.uk)