

a

by arturo alvarez

LA6843

## Arturo Alvarez Coral Sea Suspension

SOURCE: <https://www.davidvillagelighting.co.uk/product/Arturo-Alvarez-Coral-Sea-Suspension/13867>



### PRODUCT DESCRIPTION

**Designer:** Arturo Alvarez

### Arturo Alvarez Coral Sea

A natural charm, attributed to the hand-made stainless steel mesh, makes this organic pendant a stunning designer light. The Coral pendants are part of a collection inspired by the natural beauty of the coral reefs.

The Coral Sea was inspired by a marginal sea in the South Pacific, classed as one of Australia's bioregions. The sea contains many islands and reefs, including the well-known Great Barrier Reef, part of UNESCO's World Heritage Sites.

The Coral Sea can be installed on its own, and you can choose between four stainless steel colours, combine with other Coral pendants, or even create large [chandeliers](#).

Also available in a LED version, please [contact us](#) for further information on pricing.

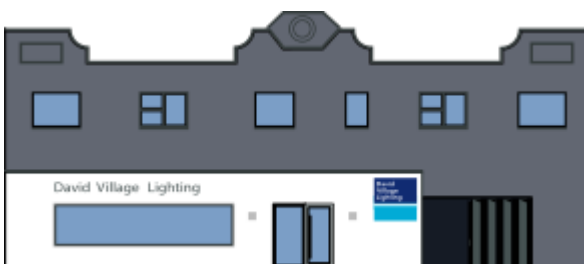
### PRODUCT SPECIFICATION

**Light Source:** 1 x Max 12W E27 LED (excluded)

**IP Code:** 20

**Dimming:** Dimmable via mains phase dimming.

**Dimensions:** Shade: Ø35cm  
Shade Height: 25cm  
Cord Length: 150cm  
Ceiling Rose: Ø8cm



**For all sales and technical enquiries, please contact:**

+44 (0)114 263 4266

[info@davidvillagelighting.co.uk](mailto:info@davidvillagelighting.co.uk)

[www.davidvillagelighting.co.uk](http://www.davidvillagelighting.co.uk)