

a

by arturo alvarez

LA6842

Arturo Alvarez Coral Galaxea Suspension

SOURCE: <https://www.davidvillagelighting.co.uk/product/Arturo-Alvarez-Coral-Galaxea-Suspension/13866>



PRODUCT DESCRIPTION

Designer: Arturo Alvarez

Arturo Alvarez Coral Galaxea

We currently have limited stock of one of these items in our [Clearance section](#).

Inspired by coral reefs these organic pendants are one way or another connected to each other. The pendant takes its name after the Galaxea genus of stony corals, mainly found in the Indo-Pacific and the Red Sea.

The hand made painted stainless steel mesh shade adds to its charm while at the same time adding volume to the pendant. The organic pendants can be installed on their own or combined with other lights of the Coral collection or form large [chandeliers](#).

Also available in a LED version, please [contact us](#) for further information on pricing.

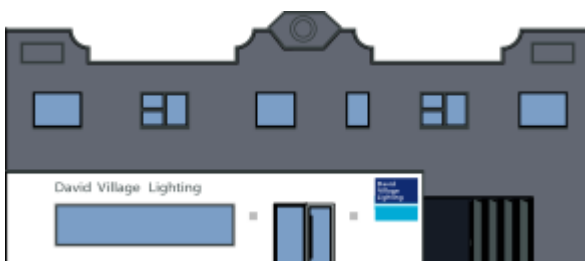
PRODUCT SPECIFICATION

Light Source: 1 x Max 12W E27 LED (excluded)

IP Code: 20

Dimming: Dimmable via mains phase dimming.

Dimensions: Ø25cm
Shade Height: 37cm
Cord Length: 150cm
Ceiling Rose: Ø8cm



For all sales and technical enquiries, please contact:

+44 (0)114 263 4266

info@davidvillagelighting.co.uk

www.davidvillagelighting.co.uk