

Artemide

# Artemide Itka Suspension Light

LA6668-50

SOURCE: <https://www.davidvillagelighting.co.uk/product/Artemide-Itka-Suspension-Light/13570>



## PRODUCT DESCRIPTION

**Designer:** Naoto Fukasawa

### Itka Suspension by Artemide

An iconic, minimal design by Naoto Fukasawa, the Itka suspension lights have an opaline glass diffuser and a metal structure. Even though that diffuser has a rather flat surface, the suspension light emits a uniformly light and doesn't create any shadowed areas. Fukasawa is characterised by the "without thought" and "design dissolving in behaviour" approach to his designs. His "outline" thinking emphasises on the relationship and the boundaries between objects, people and environment.

The Itka suspension lights are available in three sizes, as with many other lights in the collection, the Itka 20, Itka 35 and the largest Itka 50. You can explore the [Itka Collection](#), which includes three types of table lamps and a ceiling/wall light.

## PRODUCT SPECIFICATION

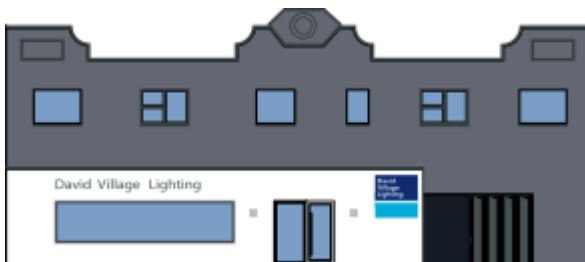
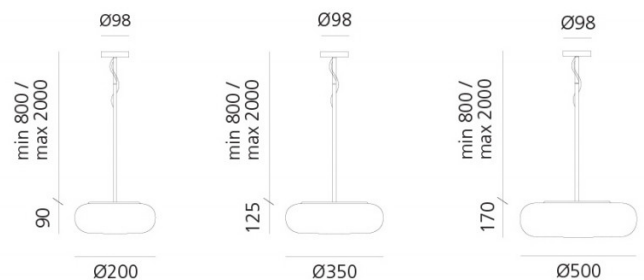
**Light Source:** **Itka 20** - 1 x 5W LED Gx53 (excluded)  
**Itka 35** - 3 x 4W LED E14 (excluded)  
**Itka 50** - 3 x 8W LED E27 (excluded)

**IP Code:** 20

**Dimming:** Non dimmable.

**Dimensions:** **Itka 20** - Ø20cm, 9cm H  
**Itka 35** - Ø35cm, 12.5cm H  
**Itka 50** - Ø50cm, 17cm H

80-200 cm cable length



**For all sales and technical enquiries, please contact:**

+44 (0)114 263 4266

[info@davidvillagelighting.co.uk](mailto:info@davidvillagelighting.co.uk)

[www.davidvillagelighting.co.uk](http://www.davidvillagelighting.co.uk)