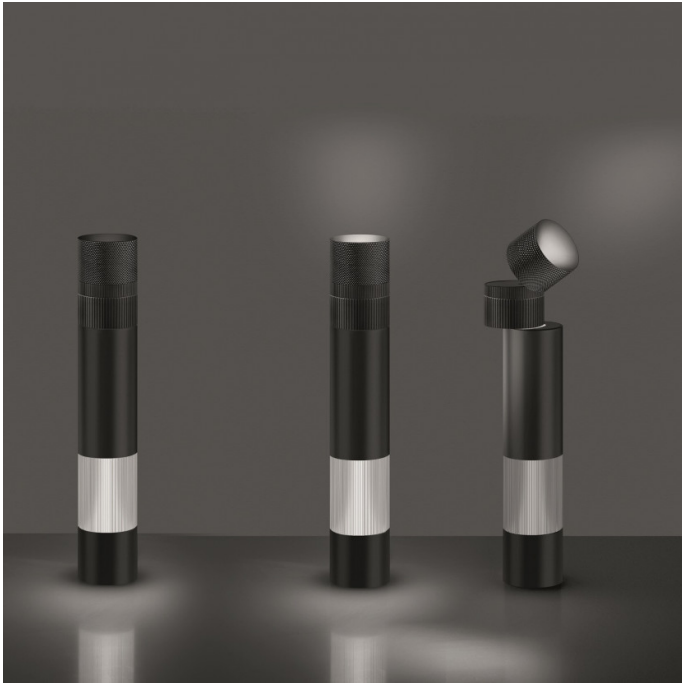


**Artemide**

LA6530

## Artemide Objective LED Table Lamp

SOURCE: <https://www.davidvillagelighting.co.uk/product/artemide-objective-led-table-lamp/13397>



### PRODUCT DESCRIPTION

**Designer:** Jean Nouvel

### Objective by Artemide

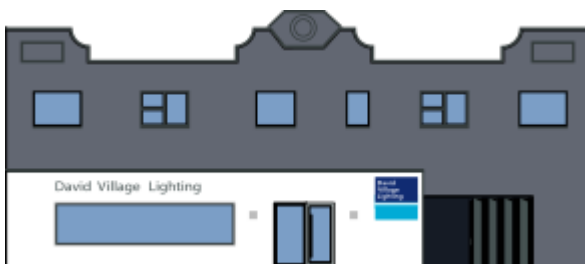
Architect and designer, Jean Nouvel, was inspired by photographic objective lenses for his table lamp design. The Objective lamp with two different light sources is meant to be used in different ways depending on the task at hand. The first light source, located on the body of the lamp, emits a diffused, ambient light at 360°. Further up along the lamp, the second segment of the spotlight emits a downlight straight onto a work surface or desk for a more focused light. This level can also rotate 360° on the horizontal axis so that you can direct the light in different parts of the working surface.

This light source also offers has upward indirect light with a spotlight that can tilted along the vertical axis between 0° and 45°.

Nouvel wanted to create a light that would remind us of a camera lens and how we manipulate it during use. Objective is a task lamp that employs all of the technological know-how and skills, something which Artemide is known for. The lamp is also equipped with a double dimmer on the body, one for the first light source and another to control the upper spotlight.

### PRODUCT SPECIFICATION

**Light Source:** 11W, 3000K, 270 lumens (spot) + 275 lumens (diffused)  
**IP Code:** 20  
**Dimming:** Integrated dimmer included on product.  
**Dimensions:** 37 cm height  
 Ø 7.2 cm



**For all sales and technical enquiries, please contact:**

+44 (0)114 263 4266

[info@davidvillagelighting.co.uk](mailto:info@davidvillagelighting.co.uk)

[www.davidvillagelighting.co.uk](http://www.davidvillagelighting.co.uk)