

Artemide

LA6265

Artemide Minomushi LED Suspension

SOURCE: <https://www.davidvillagelighting.co.uk/product/Artemide-Minomushi-LED-Suspension/13113>

PRODUCT DESCRIPTION

Designer: Issey Miyake + Reality Lab

Minomushi Suspension by Artemide

It was back in 2010, when Issey Miyake and his research team, Reality Lab, presented the 132.5 ISSEY MIYAKE. A new process, which was developed using 3D geometric principals fed into a mathematical program. The process involves a new way of clothes making, with a material that allows them to be folded flat and develop into a 3D shape.

Miyake and his team collaborated with Artemide, who brought in their lighting expertise, to create the IN-EI Issey Miyake collection. A series of lights were co-developed and manufactured, and include a free standing suspension, table and floor lamp. The material used for the lights is entirely made of recycled fibres from PET bottles. The material goes through an extensive process, to prepare it, where it is wrinkled in order to give it more strength and a unique appearance. When the shade is unfolded it takes a spiral form, that does not require an internal structure to give it shape. When not in use, the shade can be stored flat.

The team took inspiration from the book of Junichiro Tanizaki, "In'ei Reisan" which translates to "In Praise of Shadows". The author described how subtle changes of light were caused by various depths and shadow patterns. It was their ambition to bring this quality into the modern space that led to the creation of the IN-EI Issey Miyake light collection.

The Minomushi suspension is part of the collection which also includes a [floor lamp](#), a [table lamp](#) and another [suspension](#) light.



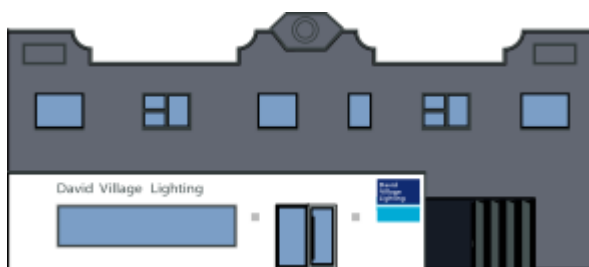
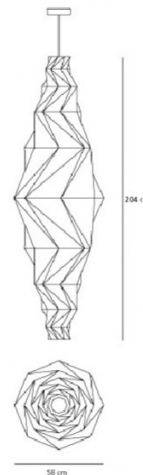
PRODUCT SPECIFICATION

Light Source: 28W, 3000K, 2527 lumens

IP Code: 20

Dimming: Dimmable via Push to make/switch dimming systems. Please consult your electrician, additional wiring may be required on site.

Dimensions: 204 cm height
425 max length
58 cm width
Ø 20 cm ceiling rose



For all sales and technical enquiries, please contact:

+44 (0)114 263 4266

info@davidvillagelighting.co.uk

www.davidvillagelighting.co.uk