



Tom Dixon Etch Pendant

LA9850

SOURCE: <https://www.davidvillagelighting.co.uk/product/tom-dixon-etch-pendant/11541>



PRODUCT DESCRIPTION

Designer: Tom Dixon

Tom Dixon Etch Pendant

A geodesic design of refined taste, the Etch pendant was inspired by mathematics while its design resembles the old Victorian tin toys. The thin metal surface is digitally acid-etched and lightly perforated to allow for light to escape, creating a tangled set of shadows.

The Etch pendant is available in two sizes with a choice of a brass or steel finish. You can create your own cluster of Etch pendants, using various finish options and/or sizes as the Etch is also available in a larger version, [Etch 50 cm - Brass](#).

Please note, that to dim the lamp you need to install a dimmable bulb.

PRODUCT SPECIFICATION

Light Source: 1 x max 42W E27 (excluded)
OR
1 x max 8-11W E27 LED (excluded)

IP Code: 20

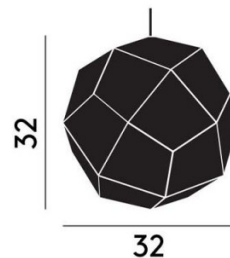
Dimming: Dimmable via mains phase dimming.

Dimensions: **Small:**
Width: 32cm
Height: 32cm

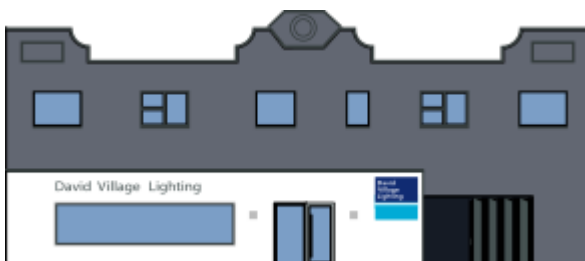
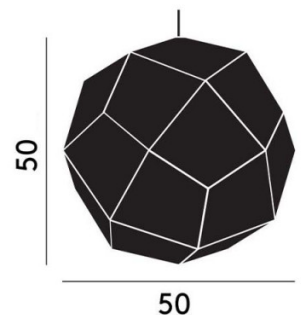
Large:
Width: 50cm
Height: 50cm

Cable Length: 250cm

Small:



Large:



For all sales and technical enquiries, please contact:

+44 (0)114 263 4266

info@davidvillagelighting.co.uk

www.davidvillagelighting.co.uk