

**Artemide**

## Artemide Melete Wall Light

LA9554

SOURCE: <https://www.davidvillagelighting.co.uk/product/Artemide-Melete-Wall-Light/10624>



### PRODUCT DESCRIPTION

**Designer:** Pio & Tito Toso

### Melete by Artemide

Designed in 2011 by Italian brothers and architects, Pio and Tito Toso for Artemide. The Melete wall light is made from a single piece of die-cast aluminium, an architectural design which interacts with the interior architecture of any setting. The interior part of the Melete is carved, and the light emits both an indirect and direct light. This is the retrofit version of the Melete, as an [integrated LED](#) is also available. Melete is available in a white finish option.

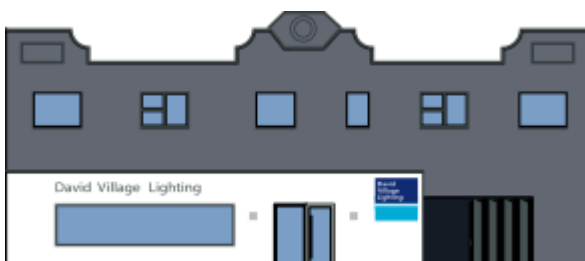
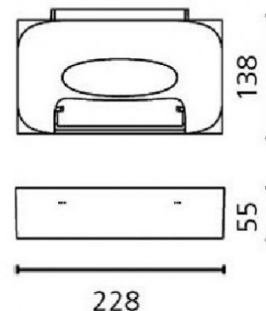
### PRODUCT SPECIFICATION

**Light Source:** 1 x 11W LED DIM R7s (excluded)

**IP Code:** 20

**Dimming:** Dimmable via mains phase dimming.

**Dimensions:** 22.8 width  
5.5 cm height  
13.8 cm depth



**For all sales and technical enquiries, please contact:**

+44 (0)114 263 4266

[info@davidvillagelighting.co.uk](mailto:info@davidvillagelighting.co.uk)

[www.davidvillagelighting.co.uk](http://www.davidvillagelighting.co.uk)