

**CLEARANCE  
OFFERS**

**LA4914/CLEAR**

## Northern Dahl Large Pendant CLEARANCE

SOURCE: <https://www.davidvillagelighting.co.uk/product/Northern-Dahl-Large-Pendant-CLEARANCE/10001648>



### PRODUCT DESCRIPTION

**Designer:** Birger Dahl

### Northern Dahl Large Pendant

**Brand New, boxed in original packaging.  
1 x Dark Grey Available.**

2016 marked the centenary of Birger Dahl's birth, which Northern Lighting commemorated with the launch of this timeless glass pendant. Dahl designed the lamp in 1956 and installed it in the renovated Norwegian Parliament building two years later. Although Dahl is a classic mid-century design, its minimal form and smooth, unembellished surfaces still have a contemporary appearance today. The shade is made from mouth-blown glass and etched by a surface treatment that creates a smooth matt finish. Dahl's metal parts are available in a dark grey finish and the shade attaches to a metal disc at the top and makes space for a pair of concentric rings to slot into the opening down below. The pendant has the same understated features that characterise Dokka and Birdy – two other classic Birger Dahl designs also re-introduced by Northern Lighting.

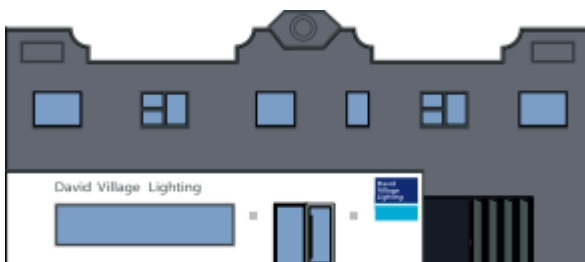
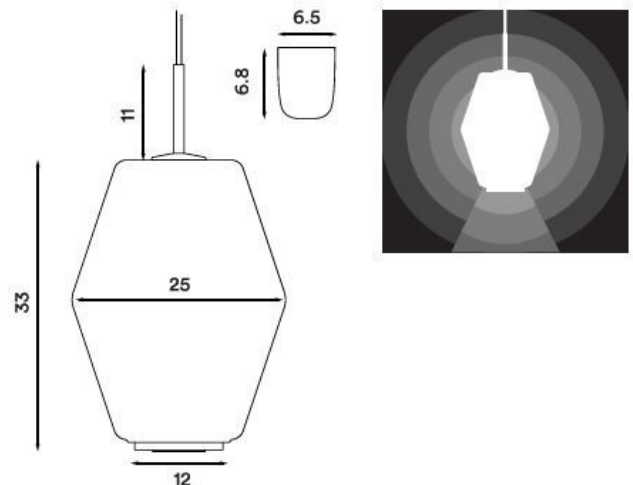
### PRODUCT SPECIFICATION

**Light Source:** 1 x Max 100W E27 (excluded)

**IP Code:** 20

**Dimming:** Dimmable via mains phase dimming.

**Dimensions:** Height: 33cm  
Width: 25cm  
Cable Length: 370cm



**For all sales and technical enquiries, please contact:**

+44 (0)114 263 4266

[info@davidvillagelighting.co.uk](mailto:info@davidvillagelighting.co.uk)

[www.davidvillagelighting.co.uk](http://www.davidvillagelighting.co.uk)