



Bert Frank Shear Pendant

LA10933

SOURCE: <https://www.davidvillagelighting.co.uk/product/Bert-Frank-Shear-Pendant/10001478>



PRODUCT DESCRIPTION

Designer: Bert Frank Design Team

Bert Frank Shear Pendant

The Bert Frank Shear Pendant combines functionality and timeless elegance, it easily adapts to a variety of contemporary interiors and never looks out of place. Shear was designed by the Bert Frank team and was one of their very first releases, since then it has grown into one of their most popular ranges. The structure features a geometric shade crafted from high-quality metal and is available in either a black or white finish - both also utilising glamorous brass detailing.

Thanks to the interior brass finish, the Shear Pendant produces a warm and inviting glow, cast softly onto the surface below, providing a calming lighting effect. This pendant can also be easily dimmed, allowing you to adjust the ambience in your room. No matter where you decide to display the Bert Frank Shear Pendant it is guaranteed to make a statement, it makes a beautiful addition to kitchens, dining rooms, living spaces and even bedrooms.

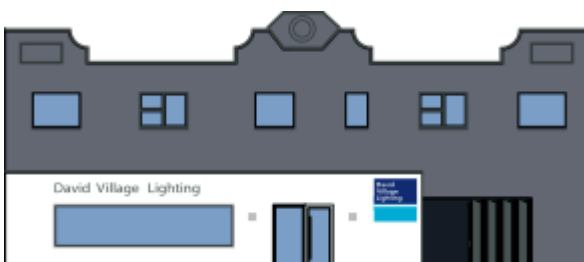
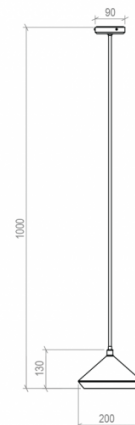
PRODUCT SPECIFICATION

Light Source: 1 x Max 4W G9 LED (included)

IP Code: 20

Dimming: Dimmable via mains phase dimming.

Dimensions: Shade: Ø20cm
Shade Height: 12cm
Drop Height: 80cm-200cm



For all sales and technical enquiries, please contact:

+44 (0)114 263 4266

info@davidvillagelighting.co.uk

www.davidvillagelighting.co.uk