

a

by arturo alvarez

## Arturo Alvarez Curvas Pendant

LA10901/P

SOURCE: <https://www.davidvillagelighting.co.uk/product/Arturo-Alvarez-Curvas-Pendant/10001404>



### PRODUCT DESCRIPTION

**Designer:** Arturo Alvarez

### Arturo Alvarez Curvas Pendant

Arturo Alvarez Curvas Pendant was created by Spanish designer, Arturo Alvarez. This classic and timeless pendant is created from coloured, irregularly shaped glass which is fused by nickel-plated steel. The origin of this shade is a reinterpretation of the Tiffany technique. The Curvas pendant is an elegant circular design which reinvents the chandeliers as a modern multi-unit composition.

The Curvas Pendant by Arturo Alvarez is a delicate shade which can be hung beautifully in a stairway, atrium or hall. The pendant is available in three sizes and one standard colourway.

### PRODUCT SPECIFICATION

**Light Source:** 1x Max 8W, E27 (Excluded)

**IP Code:** 20

**Dimming:** Dimmable via mains phase dimming

**Dimensions:** **Large**

Shade Diameter: Ø 50cm

Shade height: 23cm

Cable Length: 150cm

**Medium**

Shade Diameter: Ø 32cm

Shade height: 18cm

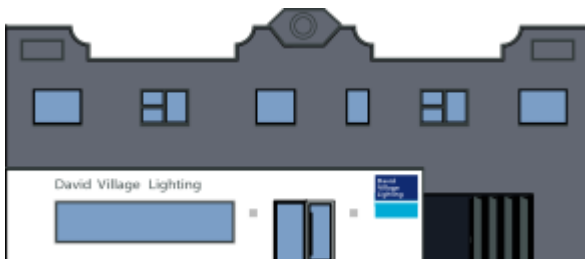
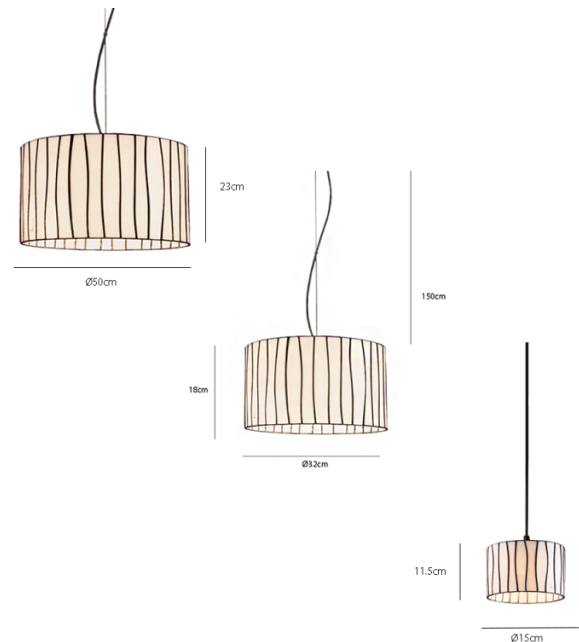
Cable Length: 150cm

**Small**

Shade Diameter: Ø 11.5cm

Shade height: 11.5cm

Cable Length: 150cm



**For all sales and technical enquiries, please contact:**

+44 (0)114 263 4266

[info@davidvillagelighting.co.uk](mailto:info@davidvillagelighting.co.uk)

[www.davidvillagelighting.co.uk](http://www.davidvillagelighting.co.uk)