

**CLEARANCE  
OFFERS**

LA6461/LED/CLEARANCE

## Davide Groppi Foil LED Wall Light CLEARANCE EX-DISPLAY

SOURCE: <https://www.davidvillagelighting.co.uk/product/Davide-Groppi-Foil-LED-Wall-Light-CLEARANCE-EX-DISPLAY/10001311>



### PRODUCT DESCRIPTION

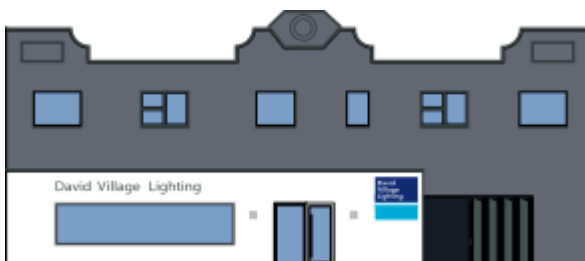
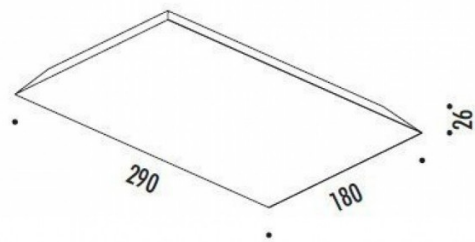
#### Davide Groppi Foil LED Wall/Ceiling Light

**Ex-Display, boxed in non-original packaging.  
1 x Available.**

The Davide Groppi Foil LED Ceiling/Wall Light is a rectangular lighting solution with a metal white finish and slanted edges. The Foil LED emits light upwards and is an ideal choice if you want to highlight ceiling or wall details. When positioned high up on the wall so that you are viewing it from underneath, it gives the illusion that it is a very thin sheet of metal. Although it's there, you can't see the thickness. Visual magic. A luminaire that amazes with skill, so you only notice its two-dimensional effect.

### PRODUCT SPECIFICATION

<b>Light Source:</b>	24.5W, 3000K, 1808 Lumens
<b>IP Code:</b>	20
<b>Dimming:</b>	Dimmable via Triac/IGBT dimming systems. Please consult your electrician, additional wiring may be required on site.
<b>Dimensions:</b>	Length: 29cm Depth: 18cm Height: 2.6cm



**For all sales and technical enquiries, please contact:**

+44 (0)114 263 4266

[info@davidvillagelighting.co.uk](mailto:info@davidvillagelighting.co.uk)

[www.davidvillagelighting.co.uk](http://www.davidvillagelighting.co.uk)