



## Gubi Tynell 9209 Table Lamp

LA5592/TA

SOURCE: <https://www.davidvillagelighting.co.uk/product/Gubi-Tynell-9209-Table-Lamp/10001210>



### PRODUCT DESCRIPTION

**Designer:** Paavo Tynell

### Tynell 9209 Table Lamp by Gubi

The beautifully classic 9209 table lamp by Gubi was first designed in 1940 by Paavo Tynell and produced by his Finnish design company, Taito. It was here where he became very popular among architects and across the country as a designer for lighting. Tynell then later went on to create a [pendant](#) version of the shade in 1947.

The 9209 table lamp's shiny spun brass shade has been referred to as 'Kypärä' – the Finnish word for 'helmet' due to its shape. 9209 has hand-wrapped lacquered rattan around a brass stem which merges into a circular brass base. The perforated shade allows trickles of light to seep through creating a minimal glow in any room whilst also being a focal light which could be used for reading.

### PRODUCT SPECIFICATION

**Light Source:** 1 x Max 6W E27 LED (excluded)

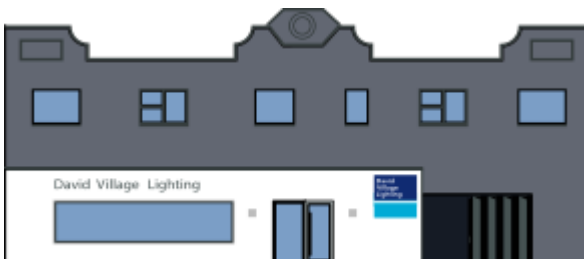
**IP Code:** 20

**Dimming:** Integrated on/off switch on the product.

**Dimensions:** Ø31.1cm shade  
58.5cm height  
210cm cable length

Ø31.1cm

58.5cm



**For all sales and technical enquiries, please contact:**

+44 (0)114 263 4266

[info@davidvillagelighting.co.uk](mailto:info@davidvillagelighting.co.uk)

[www.davidvillagelighting.co.uk](http://www.davidvillagelighting.co.uk)