

**Tom  
Dixon.**

LA5947/G

## Tom Dixon Globe LED Surface Light

SOURCE: <https://www.davidvillagelighting.co.uk/product/tom-dixon-globe-led-surface-light/10001013>

### PRODUCT DESCRIPTION

**Designer:** Tom Dixon

### Tom Dixon Globe Surface Light

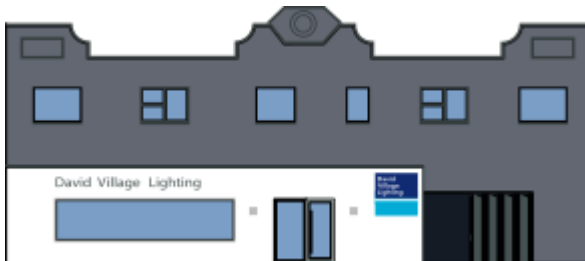
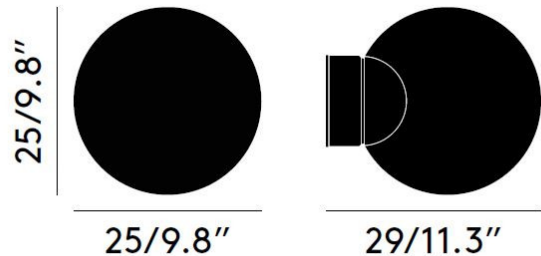
A one of a kind design, delicate in its form and a minimal sleek design. Tom Dixon Globe shade is an especially developed material: opalescent polycarbonate made with Tom Dixon's German engineering partners. For a minimalist look, Tom Dixon has removed the traditional bulb to the latest LED tech. Choose between a finish of copper, silver or opalescent, each creating a comfortable ambience.

This unique material is shatterproof, making it almost indestructible.

Tom Dixon's new integrated LED light source is replaceable after its lifetime of 50,000 hours. This can only be sourced via Tom Dixon. Please contact us for details.

### PRODUCT SPECIFICATION

**Light Source:** 6W, 3000K, 800 Lumens  
**IP Code:** 20  
**Dimming:** Dimmable using leading edge and trailing edge (Triac)  
**Dimensions:** Width: 25cm  
Height: 25cm  
Depth: 29cm



**For all sales and technical enquiries, please contact:**

+44 (0)114 263 4266

[info@davidvillagelighting.co.uk](mailto:info@davidvillagelighting.co.uk)

[www.davidvillagelighting.co.uk](http://www.davidvillagelighting.co.uk)