

**louis poulsen**

**LA10566/LE**

## Louis Poulsen PH 3/3 Limited Edition Pendant Light

SOURCE: <https://www.davidvillagelighting.co.uk/product/Louis-Poulsen-PH-33-Limited-Edition-Pendant-Light/10000727>



### PRODUCT DESCRIPTION

**Designer:** Poul Henningsen

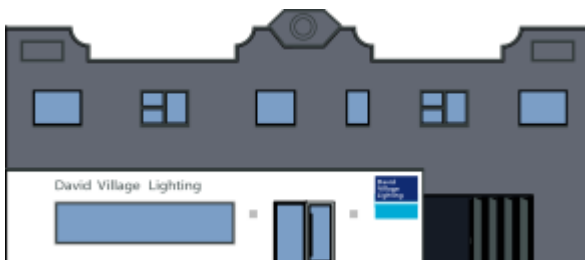
### PH 3/3 Limited Edition Pendant Light by Louis Poulsen

This elegant Limited Edition PH 3/3 pendant light is a demonstration of the beauty and fine beauty of Louis Poulsen products and Poul Henningsen designs. The top shade is made of untreated brass with fine hairlines and white painted inner reflector shade. The untreated brass is a common theme in Louis Poulsen designs as it will patina over time if unpolished. The white underside of the shade acts as a reflector to bring light into your space. This light is diffused and glare-free adding a calming atmosphere to your home. The two shades underneath are made of three layered mouth-blown opal glass that has a glossy finish on the top and a matt underside. This material creates a warming glow as well as an impressive appearance.

Small detailing so what makes this Limited Edition pendant so special. Engraved into the brass are the P.H initials that represent the designer and his successful collection. The even finer details are the perfect imperfections in the brass and opal glass that Louis Poulsen encourages you to embrace and cherish. Small bubbles in the opal glass and the hairline detailing in the brass give this design character and quality. Place this in your kitchen, dining room, or bedroom to make an impact.

### PRODUCT SPECIFICATION

**Light Source:** 1 x Max 10W E27 LED (excluded)  
**IP Code:** 20  
**Dimming:** Dimmable via mains phase dimming  
**Dimensions:** Ø33cm  
 30.7cm height  
 400cm cable length



**For all sales and technical enquiries, please contact:**

+44 (0)114 263 4266

[info@davidvillagelighting.co.uk](mailto:info@davidvillagelighting.co.uk)

[www.davidvillagelighting.co.uk](http://www.davidvillagelighting.co.uk)