



Astep Model 2109 Chandelier

LA10638

SOURCE: <https://www.davidvillagelighting.co.uk/product/astep-model-2109-chandelier/10000662>



PRODUCT DESCRIPTION

Designer: Gino Sarfatti

Le Sfere Model 2109 Chandelier by Astep

The Model 2109 chandelier was designed by Gino Sarfatti and is part of the prolific [Astep Le Sfere collection](#). The range started with a wall light, featuring a single glass lampshade that produced a wondrous and effective glow. Over the years the design expanded, creating many different applications including this stunning and show-stopping chandelier. The chandelier light features multiple glass globes, held together by a beautiful and delicate metal structure.

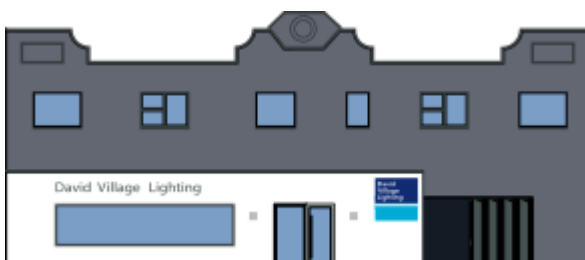
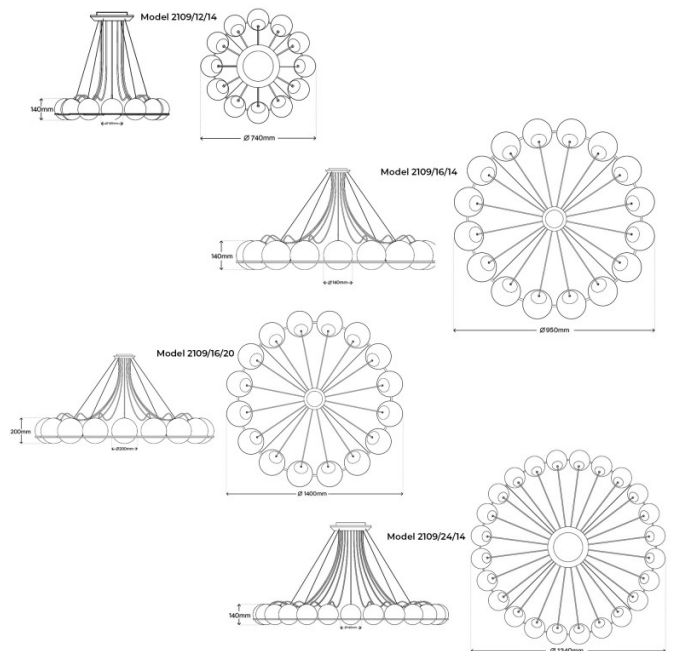
Available in black or champagne, the Model 2109 chandelier comes in several sizes and versions, featuring from 12 to 24 individual shades. The smaller sizes can be used in smaller spaces and as accent lighting, whereas the larger sizes can be used as a magnificent feature light. A classic design, this chandelier will add a vintage and graceful touch to any interior.

PRODUCT SPECIFICATION

Light Source: **Model 2109/12/14** - 12 x max 4.5W E14 LED (included)
Model 2109/16/14 - 16 x max 4.5W E14 LED (included)
Model 2109/16/20 - 16 x max 7W E27 LED (included)
Model 2109/24/14 - 24 x max 4.5W E14 LED (included)

IP Code: 20

Dimming: Dimmable via mains phase dimming



For all sales and technical enquiries, please contact:

+44 (0)114 263 4266

info@davidvillagelighting.co.uk

www.davidvillagelighting.co.uk