

mater

Mater Dome Table Lamp

LA10630

SOURCE: <https://www.davidvillagelighting.co.uk/product/Mater-Dome-Table-Lamp/10000649>

PRODUCT DESCRIPTION

Designer: Todd Bracher

Mater Dome Table Lamp

The Mater Dome table lamp is an award winning design by Tord Boontje that features an iconic spherical shade. This design provides a gentle glow that is ideal for providing an ambient atmosphere. The Dome table lamp is a classic example of Scandinavian design with its smooth lines and minimalist nature.

Available in two sizes, the Dome (Ø40cm) and the Baby Dome (Ø25cm), this table lamp allows you to place this lamp anywhere in your home. From a calming addition to your desk space or a decorative element on your shelf or bedside. Available in a selection of finishes which are brass, aluminium, and black. This lamp will compliment multiple interiors as the metallic finishes add a luxurious feel and the matt black brings a minimalist monochrome touch to your home.

PRODUCT SPECIFICATION

Light Source: 2 x max 6W E27 LED (excluded)**IP Code:** 20**Dimming:** In line on/off switch included on the cable.

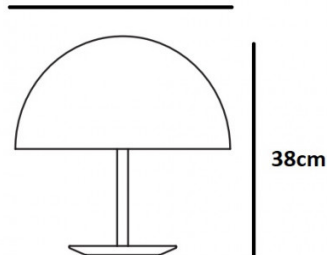
Dimensions: Baby Dome:
Ø25cm shade
24.5cm height

Dome:
Ø40cm shade
38cm height

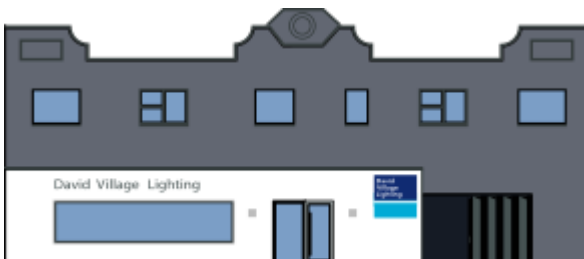
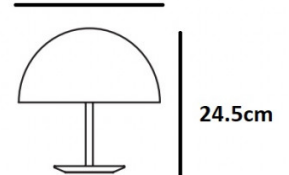
200cm cable length

Dome

Ø40cm

Baby Dome

Ø25cm

**For all sales and technical enquiries, please contact:**

+44 (0)114 263 4266

info@davidvillagelighting.co.ukwww.davidvillagelighting.co.uk