

**ertiluz®**

LA10569

## Estiluz Bols LED Outdoor Floor Lamp

SOURCE: <https://www.davidvillagelighting.co.uk/product/Estiluz-Bols-LED-Outdoor-Floor-Lamp/10000488>

### PRODUCT DESCRIPTION

**Designer:** Mermelada Estudio

### Estiluz Bols Multipurpose Outdoor Floor Lamp

An ingenious design by Mermelada Estudio, the Bols lamps create a playful game of light and shadows. The lamps are ideal for outdoor use (IP65) in the garden, patio or balcony. Definitely a statement piece, the Bols floor lamps instantly draw the eye and impress. Their structure allows you to change their function, to add an extra surface or some greenery and plants to your space.

The Bols body is made of metal, with a polyethylene shade suitable for exterior use. The metal has a double coating powder paint resistant to both corrosion and other environmental conditions.

Add the plate kit and use your lamp to enjoy your coffee or drink in the garden, or bring more plants to your balcony. The flower pot and table kits are available in a matching oxide red or black anthracite finish. Whatever the use, the Bols are a statement light. Available in oxide red or black anthracite and two sizes to choose from. The large Bols can take both the table and flower pot kit, whereas the small will only take the table kit tray.

**A bolt down floor base kit in matching colour is available for both sizes if you wish to keep the light in a fixed position. Please [contact us](#), for more information and prices.**

\*plants are not included



## PRODUCT SPECIFICATION

**Light Source:** 10W, 2700K, 730 Lumens

**IP Code:** 65

**Dimming:** Dimmable via Triac dimming.

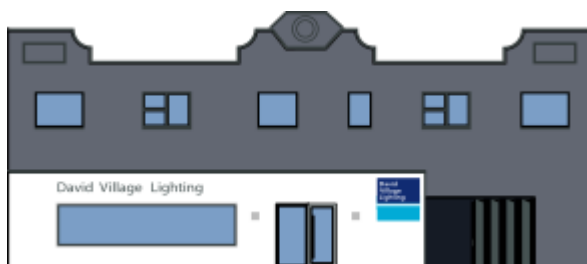
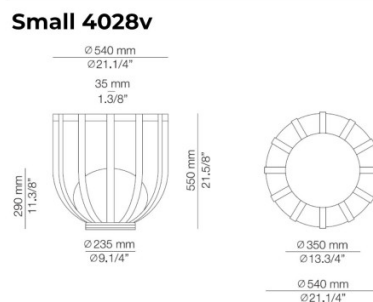
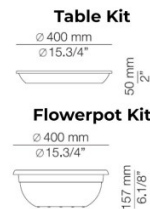
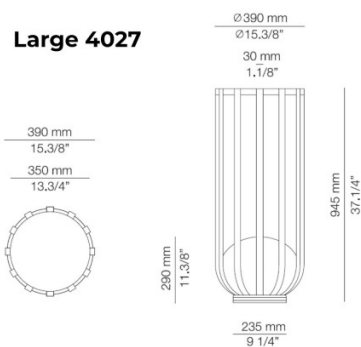
**Dimensions:** **Small 4028**  
 Ø54cm  
 Height: 55cm  
 Base: Ø23.5cm

**Small Table Kit**  
 Ø55.5cm  
 Height: 7.4cm

**Large 4027**  
 Ø39cm  
 Height: 94.5cm  
 Base: Ø23.5cm

**Table Kit**  
 Ø40cm  
 5cm

**Flowerpot Kit**  
 Ø40cm  
 Height: 15.7cm



**For all sales and technical enquiries, please contact:**

+44 (0)114 263 4266

[info@davidvillagelighting.co.uk](mailto:info@davidvillagelighting.co.uk)

[www.davidvillagelighting.co.uk](http://www.davidvillagelighting.co.uk)