

pholc

Pholc Mobil 70 Pendant

LA10563

SOURCE: <https://www.davidvillagelighting.co.uk/product/Pholc-Mobil-70-Pendant/10000451>



PRODUCT DESCRIPTION

Designer: Monika Mulder

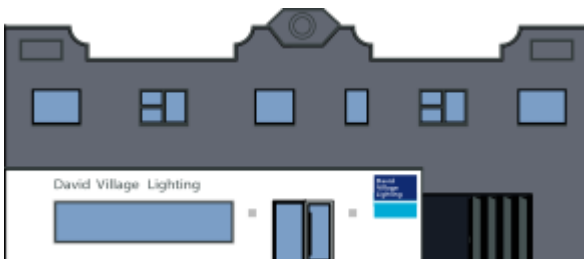
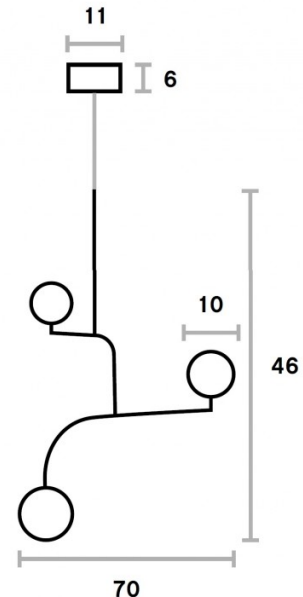
Mobil 70 Pendant Light by Pholc

Asked to create a light that would good in a New York loft, designer Monika Mulder conceived of the Mobil lights for Pholc. Mulder takes inspiration from the black balconies in the city and the round lights that feature on the Brooklyn Bridge, creating a unique and contemporary suspension that can be used as a main or feature light.

Consisting of three lampshades, the Mobil 70 pendant lamp features three metal branches that hold the shade to create an intriguing and sculptural aesthetic. The shades conceal the light bulbs, producing a warm and diffused glow that will act to illuminate your interior well. Use in homes, offices and commercial spaces for an elegant and forward-thinking solution.

PRODUCT SPECIFICATION

Light Source: 3 x Max 20W G9 LED (excluded)
IP Code: 20
Dimming: Dimmable via mains phase dimming.
Dimensions: Shade: Ø10cm
 Width: 70cm
 Height: 46cm
 Ceiling Canopy: Ø11cm
 Cable Length: 300cm



For all sales and technical enquiries, please contact:

+44 (0)114 263 4266

info@davidvillagelighting.co.uk

www.davidvillagelighting.co.uk