



## Gubi Unbound LED Floor Lamp

LA10476/F

SOURCE: <https://www.davidvillagelighting.co.uk/product/Gubi-Unbound-LED-Floor-Lamp/10000238>

### PRODUCT DESCRIPTION

**Designer:** Space Copenhagen

### Gubi Unbound LED Floor Lamp

The Unbound collection was designed by Space Copenhagen with the aim of creating a pared-back take on a traditional Japanese paper lantern that balances delicate beauty and functionality. The intriguing juxtaposition created between the fabric shade and the marble base provides the feeling of stillness and weightlessness. This LED Floor lamp gives a distinctive expression as the teardrop shaped shade silhouette is reminiscent of a ship with a billowing sail.

Available in two sizes, H80 and H120, this Gubi Floor lamp has a versatile use. The integrated dimmable LED light is placed along the dark antique brass arm that supports the shade from the inside. This cleverly conceals the energy efficient LED strip making it appear as if the lamp is illuminated naturally. The fabric shade can then be rotated 360 degrees with the lightest touch. This exposes the bottom of the tubular shade and creates a warming down light.

The gently diffused light through the linen or canvas shade creates a 'zen-like' light that cast a spacious atmospheric feeling. Perfect for a restaurant or living space to the most formal workspace, the [Unbound collection](#) feels lighter and looser, as though it might float away at any moment. Individually, this stunning Unbound floor lamp can calm and warm an interior however as a cluster of two or more, the shades can be positioned in unison or at angles to one another creating a peaceful feature even when switched off.



## PRODUCT SPECIFICATION

**Light Source: H80**

13W, 2700K, 1000 lumens

**H120**

20W, 2700K, 1500 lumens

**IP Code:** 20

**Dimming:** In line dimmer included on cable.

**Dimensions: H80**

80cm height

13.8cm width

17cm depth

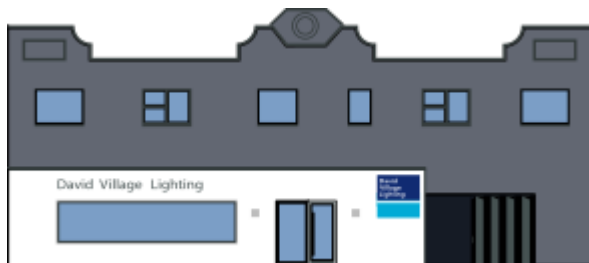
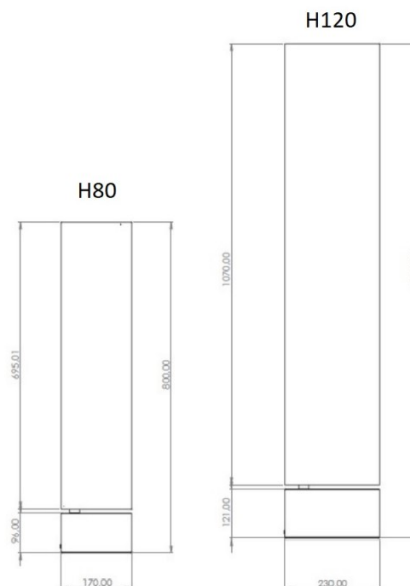
**H120**

120cm height

18.6cm width

23cm depth

200cm cable length



**For all sales and technical enquiries, please contact:**

+44 (0)114 263 4266

[info@davidvillagelighting.co.uk](mailto:info@davidvillagelighting.co.uk)

[www.davidvillagelighting.co.uk](http://www.davidvillagelighting.co.uk)