

marset

LA7844/LE

Marset FollowMe Black LED Limited Edition Portable Lamp

SOURCE: <https://www.davidvillagelighting.co.uk/product/Marset-FollowMe-Black-LED-Limited-Edition-Portable-Lamp/10000229>

PRODUCT DESCRIPTION

Designer: Inma Bermúdez

FollowMe Black Limited Edition Portable LED Lamp

We currently have limited stock of one of these items in our [Clearance section](#).

The Limited Edition FollowMe LED portable table lamp was designed by Inma Bermúdez and has become a design icon within a few short years. Being described as a '*daring pioneer of portable lighting*', the FollowMe is now available in a **limited edition black finish**.

This portable LED table lamp features a rocking opal diffuser that can be tilted to direct and diffuse the light source with ease and precision. This diffuser creates a **warm glowing light that can last up to 20 hours when fully charged**. With a USB and wall plug included, the rechargeable nature of the FollowMe portable light allows you to take a calming sleek lamp wherever you go. The **smooth oak veneer handle** invites you to hold and carry the light along with you, creating a cozy atmosphere and a personal object of light and warmth.

The limited-edition black finish is **one of Marset's most sophisticated colours** that outlines its shape, emphasizes its silhouette and creates a sharp contrast between the white shade and the frame. This refined and understated version of the [Marset FollowMe range](#) features a black natural oak veneer handle with **chrome detailing**. By simply pressing the chrome switch you are able to easily turn on the light and increase the lumen output. This bold portable lantern-style table lamp is perfect for homes, restaurants, or terraces that have no access to electrical outlets.

Read more about the FollowMe Black on our [Blog](#).



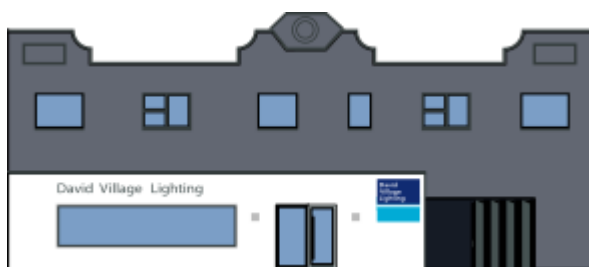
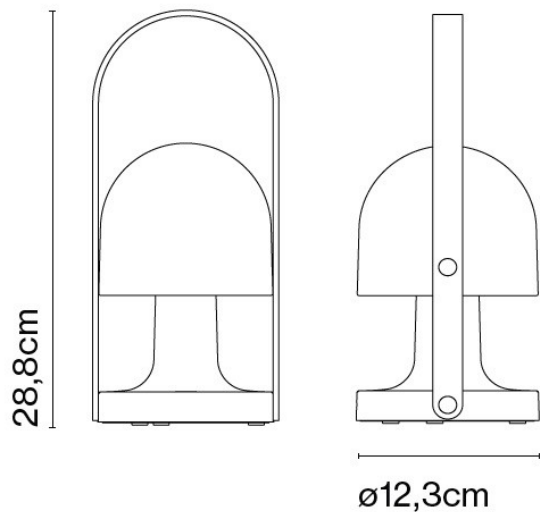
PRODUCT SPECIFICATION

Light Source: 3.2W, 2700K, 240 lumens

IP Code: 20

Dimming: Integrated dimmer on the product

Dimensions: Ø12.3cm
28.8 cm height



For all sales and technical enquiries, please contact:

+44 (0)114 263 4266

info@davidvillagelighting.co.uk

www.davidvillagelighting.co.uk