

ANGLEPOISE®

LA5303/B

## Anglepoise Original 1227 Midi Brass Pendant

SOURCE: <https://www.davidvillagelighting.co.uk/product/anglepoise-original-1227-midi-brass-pendant/10000127>



### PRODUCT DESCRIPTION

**Designer:** George Carwardine

### Anglepoise Original 1227 Midi Brass Pendant

The Anglepoise Original 1227 Midi Brass Pendant is the newest reinvention of the iconic Anglepoise design. By maintaining its recognisable lamp shade whilst adding increased flexibility and metallic brass fitting, this retro style ceiling lamp can bring a striking visual feature to any space.

The flexibility of the fitting make this ceiling lamp adaptable for many different dynamic spaces whilst adding elegance with its gloss finish and brass features. This new Anglepoise design is available in three classic colours which are Jet Black, Elephant Grey and Ink Blue which perfectly compliment the metallic brass and flexible 150cm cable. By adding a modern touch to a classic piece of lighting history, Anglepoise Original 1227 Midi Brass Pendant is a timeless British design.

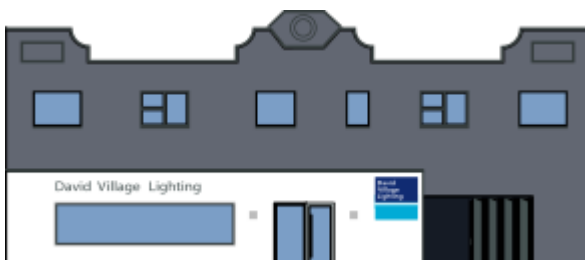
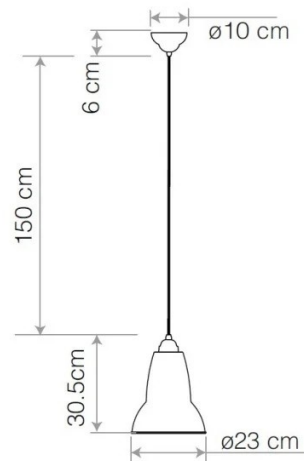
### PRODUCT SPECIFICATION

**Light Source:** 1 x max 15W E27 (excluded)

**IP Code:** 20

**Dimming:** Dimmable via mains phase dimming

**Dimensions:** ø23cm Shade  
30.5cm Shade height  
150cm Cable length  
ø10cm Ceiling rose



**For all sales and technical enquiries, please contact:**

+44 (0)114 263 4266

[info@davidvillagelighting.co.uk](mailto:info@davidvillagelighting.co.uk)

[www.davidvillagelighting.co.uk](http://www.davidvillagelighting.co.uk)